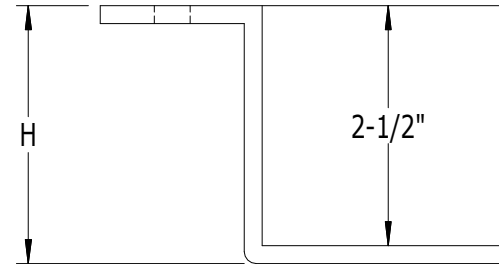
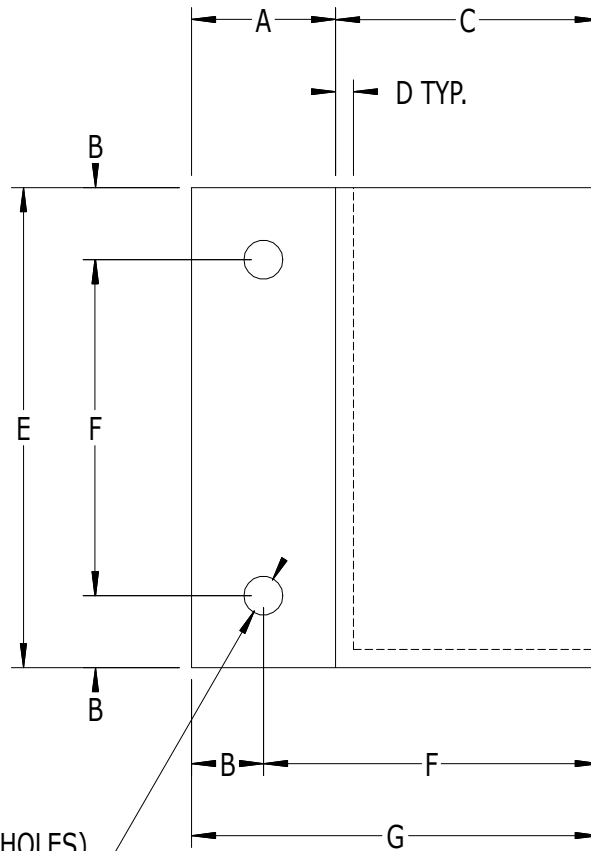


SCALE: 1/2



**NOTE**

PART CAN BE MADE EITHER  
LEFT HAND OR RIGHT HAND  
(AS SHOWN OR OPPOSITE)

I (DIA. ANCHOR HOLES)  
(3/8" DIA. FASTENERS REQ'D)

**#976 ISC - INSIDE CORNER SIDE MOUNT BASE**  
**FOR 2-1/2" SQ. POST**

LABEL	A	B	C	D	E	F	G	H	I
DIMENSION	1-1/2"	3/4"	2-3/4"	3/16"	5"	3-1/2"	4-1/4"	2-11/16"	13/32"

